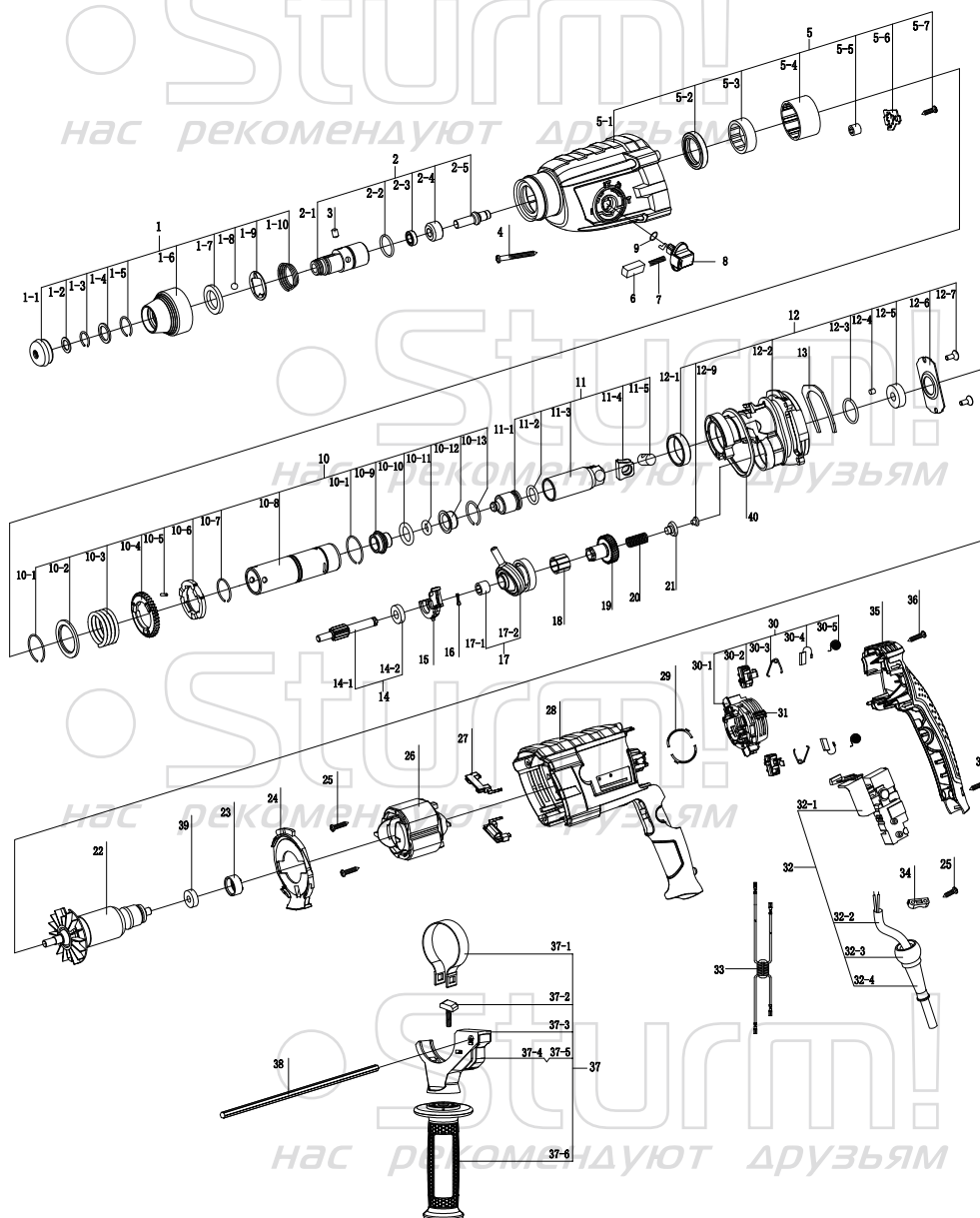


RH2524BR



| NO. | DESCRIPTION | NO. | DESCRIPTION | NO. | DESCRIPTION |
|------|------------------------|-------|-----------------------|------|--------------------------|
| 1 | PROTECTION SLEEVE ASSY | 10-5 | PIN | 21 | SPRING HOLDER |
| 1-1 | PROTECTION CAP | 10-6 | CLUTCH DISK | 22 | ROTOR |
| 1-2 | WASHER | 10-7 | CIRCLIP | 23 | RUBBER BEARING SLEEVE |
| 1-3 | CIRCLIP | 10-8 | ROTARY SLEEVE | 24 | WIND GUIDE |
| 1-4 | LOCATION RING | 10-9 | GUIDE BUSHING | 25 | SCREW ST3.9×16 |
| 1-5 | CIRCLIP 19×2 | 10-10 | O-RING | 26 | STATOR |
| 1-6 | PROTECTION SLEEVE | 10-11 | O-RING | 27 | TERMINAL BOARD |
| 1-7 | WASHER | 10-12 | DAMPING BUSHING | 28 | HOUSING |
| 1-8 | STEEL BALL Ø7.14 | 10-13 | CIRCLIP | 29 | SWITCH CONTACT |
| 1-9 | WASHER | 11 | CYLINDER ASSY | 30 | CARBON BRUSH HOLDER ASSY |
| 1-10 | SPRING | 11-1 | PISTON | 30-1 | CARBON BRUSH HOLDER |
| 2 | DRILL SLEEVE ASSY | 11-2 | O-RING | 30-2 | BRUSH HOLDER |
| 2-1 | DRILL SLEEVE | 11-3 | CYLINDER | 30-3 | SPRING |
| 2-2 | O-RING | 11-4 | WASHER | 30-4 | CARBON BRUSH |
| 2-3 | OIL SEAL | 11-5 | PIN | 30-5 | COIL SPRING |
| 2-4 | THRUST RING | 12 | BRACKET ASSY | 31 | FORWARD/REVERSE BUTTON |
| 2-5 | IMPACT ROD | 12-1 | BUSHING | 32 | SWITCH ASSY |
| 3 | PIN | 12-2 | BRACKET | 32-1 | SWITCH |
| 4 | SCREW ST4.8×45 | 12-3 | O-RING | 32-2 | CORD |
| 5 | GEAR HOUSING ASSY | 12-4 | WOOL FELT | 32-3 | CORD GUARD PETIOLE |
| 5-1 | GEAR HOUSING | 12-5 | BALL BEARING 609RS | 32-4 | CORD GUARD |
| 5-2 | OIL SEAL | 12-6 | BEARING PRESS PLATE | 33 | INDUCTOR |
| 5-3 | NEEDLE BEARING HK3012 | 12-7 | SCREW M4×10 | 34 | CORD CLIP |
| 5-4 | BEARING SLEEVE | 12-9 | CONVEX WASHER | 35 | HOUSING COVER |
| 5-5 | NEEDLE BEARING HK0709 | 13 | BRACKET PRESS PLATE | 36 | SCREW ST4.2×24 |
| 5-6 | WASHER | 14 | MIDDLE GEAR ASSY | 37 | AUXILIARY HANDLE ASSY |
| 5-7 | SCREW ST4.2×13 | 14-1 | MIDDLE GEAR | 37-1 | CLAMPING BAND |
| 6 | LOCKING BUTTON | 14-2 | BEARING 699 | 37-2 | T- BOLT |
| 7 | SPRING | 15 | SHIFT FORK | 37-3 | CLAMP HOLDER |
| 8 | SELECTOR KNOB | 16 | SNAP RING | 37-4 | SPRING |
| 9 | O-RING | 17 | ROCKER BEARING ASSY | 37-5 | CLAMP |
| 10 | ROTARY SLEEVE ASSY | 17-1 | NEEDLE BEARING HK0908 | 37-6 | AUXILIARY HANDLE |
| 10-1 | CIRCLIP | 17-2 | ROCKER BEARING | 38 | DEPTH RULER |
| 10-2 | WASHER | 18 | K15 NEEDLE BEARING | 39 | BEARING 607RS |
| 10-3 | SPRING | 19 | BEVEL GEAR | 40 | O-RING |
| 10-4 | BIG GEAR | 20 | SPRING | | |